

MAY



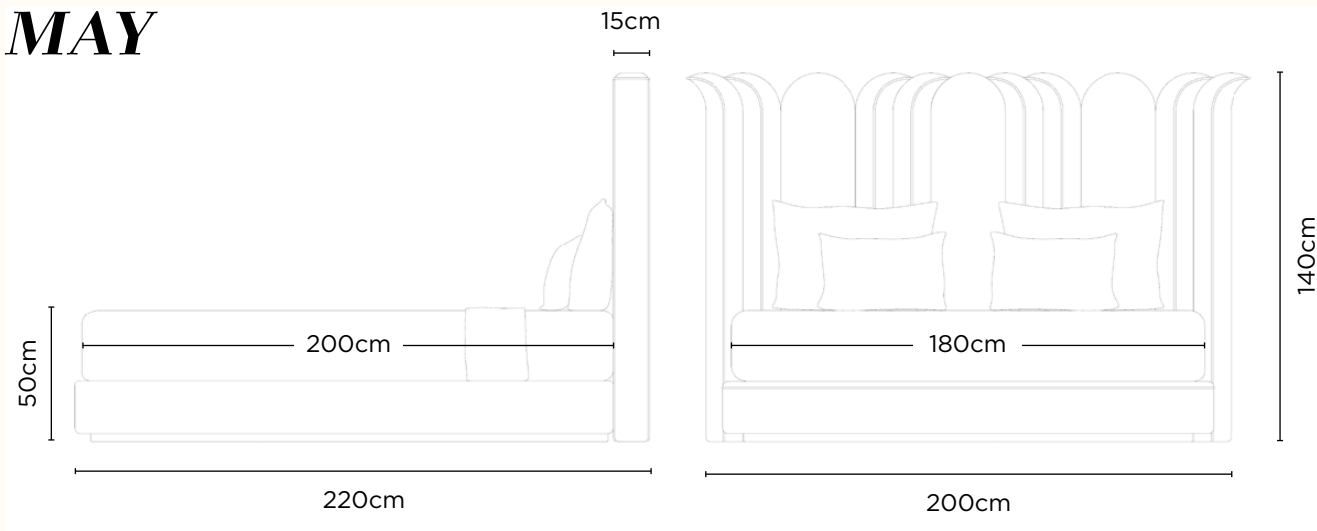
Majestic and fertile, nature has always served as a muse for creators past and present. The *Arts & Crafts* movement was particularly inspired by it to guide and support the creativity of artisans who had become disoriented by the rise of industry. Among the works of this period are the famous tapestry motifs of William Morris. The plants are represented undulating and arranged in a captivating, delicately colored geometry.

Both graphic and timeless, the silhouette of the MAY bed is a contemporary reinterpretation of this ornamental flora, stylized by human ingenuity wishing to bring the beauty of nature into the heart of the home. Rounded elements of very modern simplicity alternate with pieces whose curved ends seem poised to unfurl like spring buds. The piping placed at their center evokes the main vein of a leaf and the line of the original drawing of the project. This delicate detail of trimmings symbolizes the vitality instilled into the work by the upholsterer's expert hand.

Refined lines, well-proportioned volumes, and high quality materials... MAY conveys a part of cultural and artisanal heritage of excellence with a simple aim : provide a comfortable and beautiful bed that will remain a treasured place in the home for many years.

EDA25-156

MAY



Tone-on-tone colors

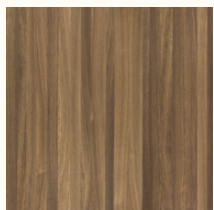


Contrasting colors



Shades of colors

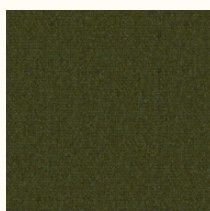
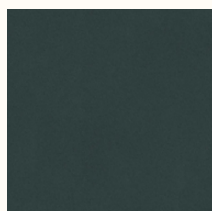
European solid oak



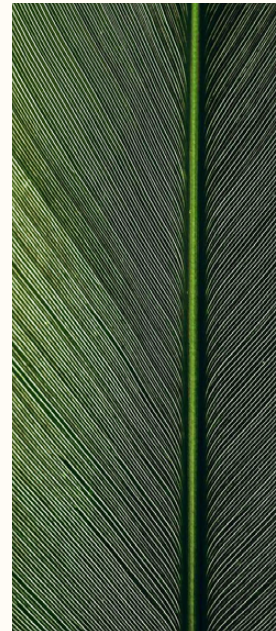
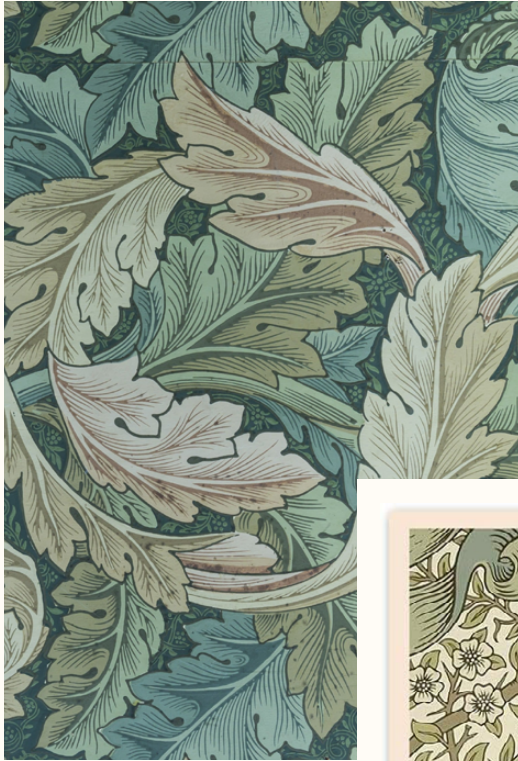
*Eco-certified
half-cotton
half-linen fabric*

MAY is presented in a natural beige hue with slightly contrasting piping, allowing it to integrate seamlessly contemporary interiors seeking a soothing, refined atmosphere.

Its British origins, however, make it available in a range of colors, encouraging the free exploration of contrasting elements and enabling it to meet the most distinctive and colorful of aesthetic desires.



MAY



EDA25-156